



Loopmasters

INSTALLATION GUIDE

Thank you for purchasing this pack from Loopmasters.com!

We're here to help you get set up making great music as soon as possible.

If you do encounter any difficulties, [click here](#) for our contact details.

INSTALLATION INSTRUCTIONS

Once you've downloaded the sample pack, extract the ZIP file to your preferred location on your computer.

Navigate to your instructions using the links below.

NOTE: Please bear in mind these are general installation instructions, you may not find all of these formats within your purchased pack.

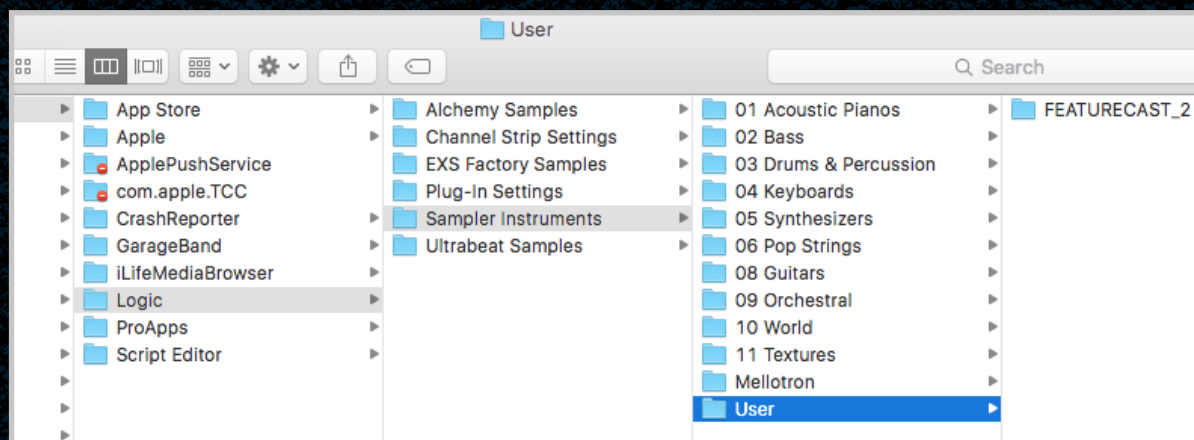
[Home](#) [EX24 \(Logic\)](#) [Kontakt](#) [Halion](#) [NNXT](#) [Ableton Live](#) [Apple Loops](#) [Reason Refills](#) [Rex Files](#)
[MIDI Files](#) [Maschine](#) [Sylenth](#) [Serum](#) [Massive](#) [Absynth](#) [FM8](#) [Contact Us](#)

SAMPLER PATCHES : EX24 (LOGIC)

EXS24 (Logic)

Copy the **Sampler Patches** and **Sounds & FX** folders to your Logic Sampler Instruments folder - located here:

username/Library/Application Support/Logic/Sampler Instruments



You may like to create a **User** folder like the one above. Now open Logic and load an EXS24 sampler Instrument and load the Exs24 patches by clicking here:

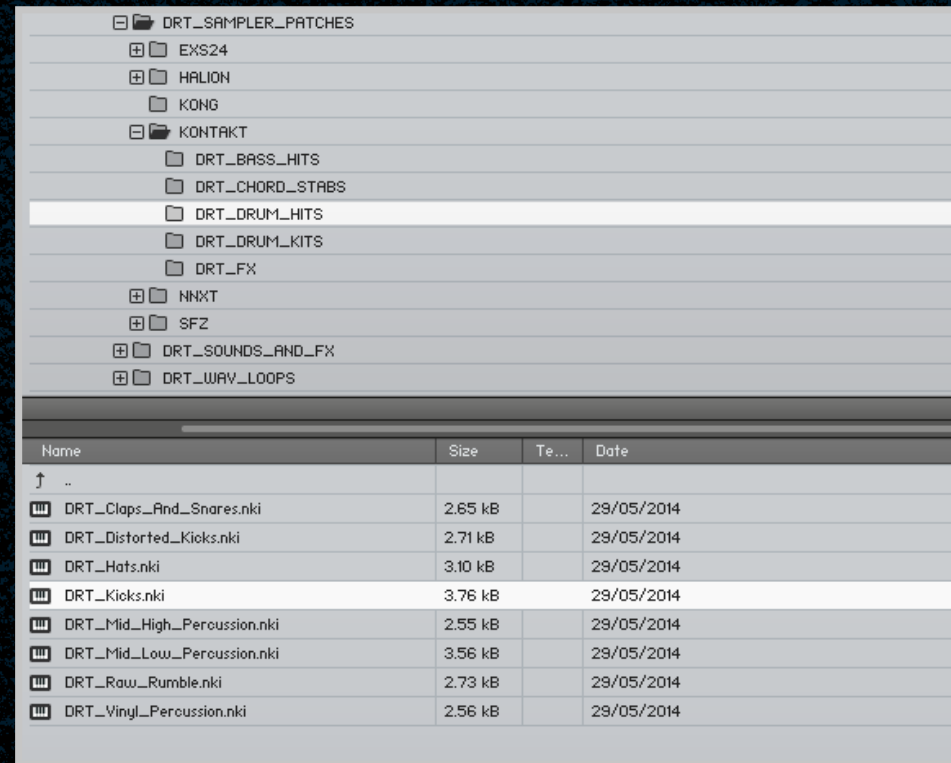


SAMPLER PATCHES : KONTAKT

Native Instruments Kontakt

Load an instance of Kontakt, and show the file browser to navigate to your purchased sample pack. Locate the Kontakt folder within the sampler patches.

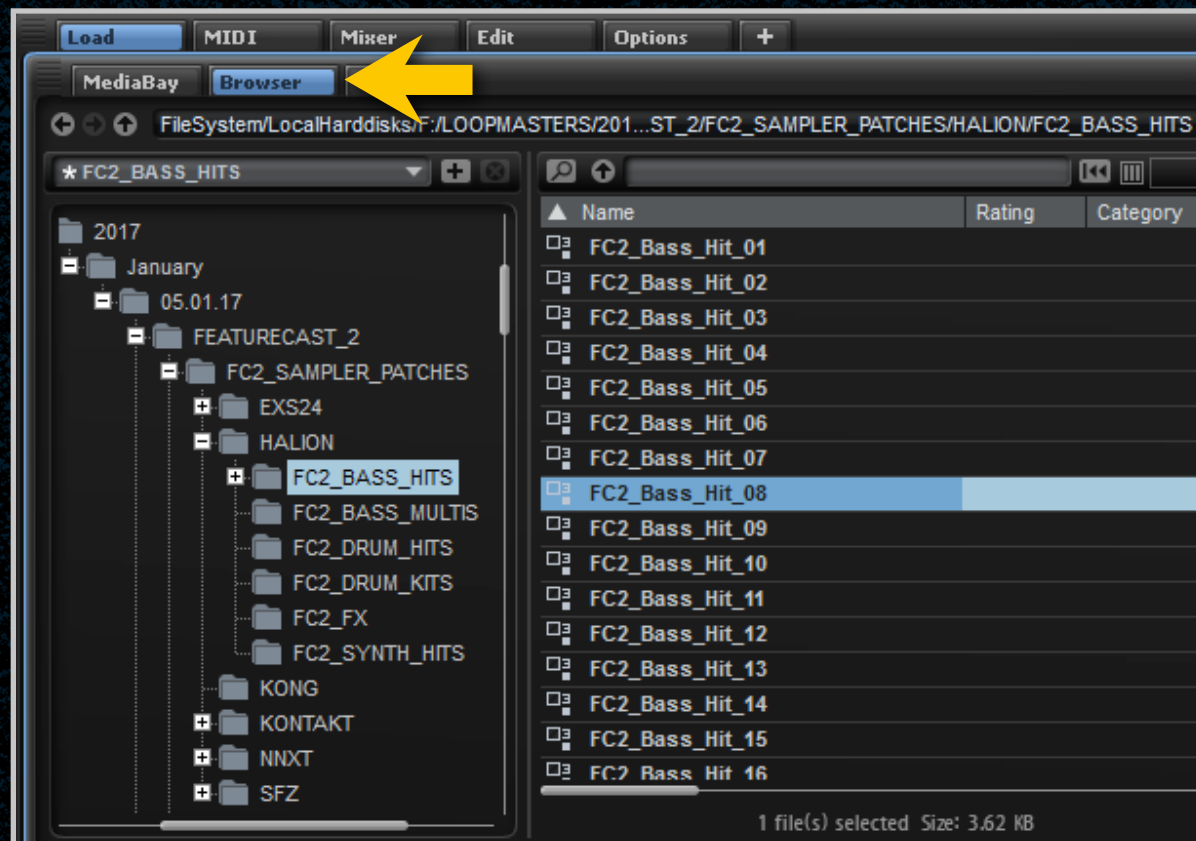
You may select the patch you want in the lower pane.



SAMPLER PATCHES : HALION

Halion

Open Halion in your DAW, and navigate to the **Browser**, which will display your computer file system. Locate your purchased sample pack on the **local hard drives** and select the desired patch within the Halion **Sampler Patches** folder.



SAMPLER PATCHES : NNXT (REASON)

NNXT (Reason)

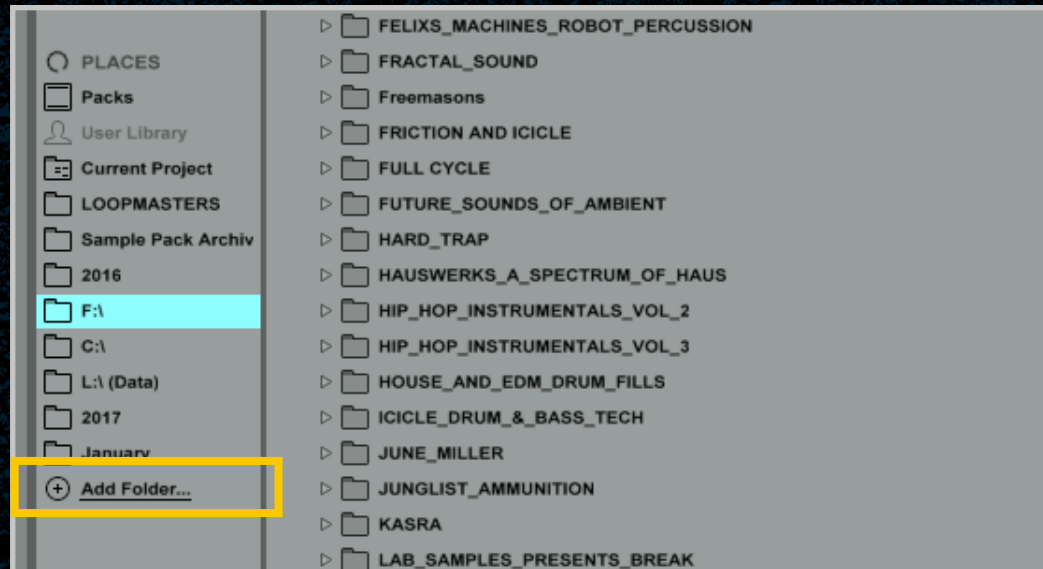
Load an NNXT device in Reason and click **Load Patch**. Navigate to your new sample pack and load the desired patch from the NNXT **Sampler Patches** folder.



FILE FORMATS : ABLETON LIVE PACK

Ableton Live Pack

Create a folder on your computer to install your live packs into. Within Ableton Live click **Add Folder...** on the left pane and locate the folder you have chosen. This shortcut will enable you to load sample packs quickly and easily.

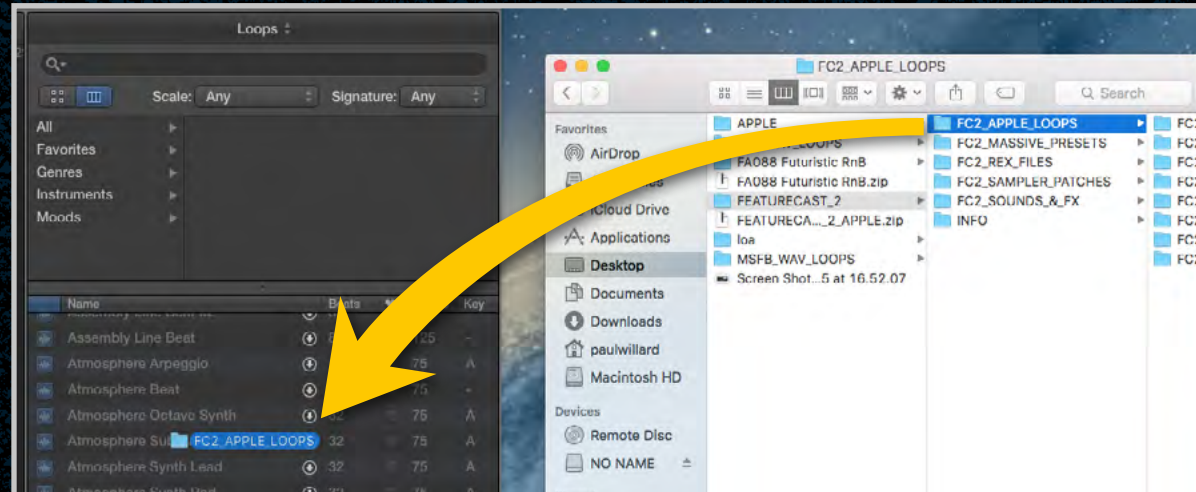


Now double click the ALP file you have downloaded and you'll be prompted to choose a location for the install. Select the folder which you added to Ableton earlier.

FILE FORMATS : APPLE LOOPS

Apple Loops

Open Logic and locate your Apple Loops folder (**Press O**). Your new Apple Loops should be dropped here, as in the picture below:



Click **Move to Loops Folder** and the loops will be added to your Apple Loops Library.

If you have a large number of packs, make a note of the prefix of the pack you need eg. **FC2** – this will enable you to filter the results when searching for specific samples:

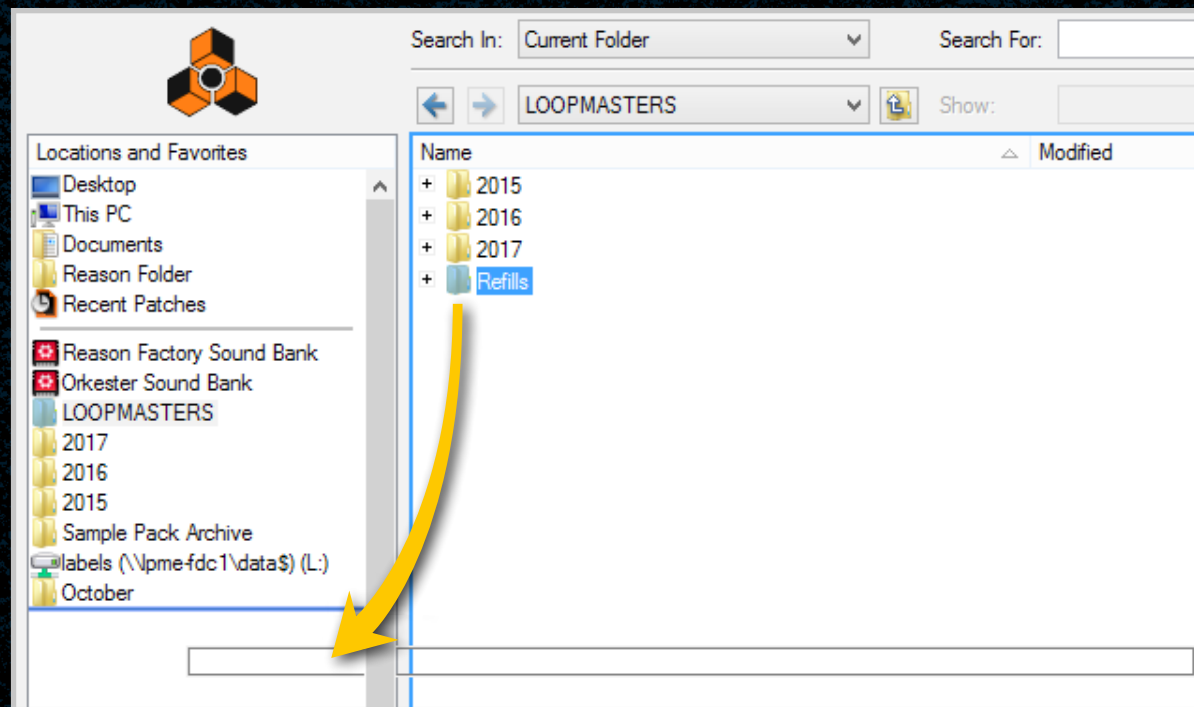


FILE FORMATS : REASON REFILLS

Reason Refills

We recommend creating a **Refills** folder on your computer and placing all of your purchased Refills here. Within Reason load a device and open the instrument/effect browser.

Locate the folder and drag it from the browser to **Locations and Favorites** within the left sided panel. Now move your purchased Refill to this folder.



FILE FORMATS : REX FILES

Rex Files

Rex files can be loaded in the **Dr. OctoRex** player in Reason. Simply click the **Browse Patch** button and locate the file you require. You can load up to 8 Rex files into the slots!



FILE FORMATS : MIDI FILES

MIDI Files

MIDI files are note sequences which can be imported, edited and transposed in your DAW. Importing MIDI files will vary between programs - some will allow you to drag-and-drop directly into the sequencer (eg. Ableton, Studio One). If this is not the case, you will find that **File > Import MIDI File** will allow you to load each MIDI file (Reason, Cubase, Logic, FruityLoops, Renoise etc).

Assign an instrument or VST to the MIDI track and you are ready to go!

FILE FORMATS : MASCHINE

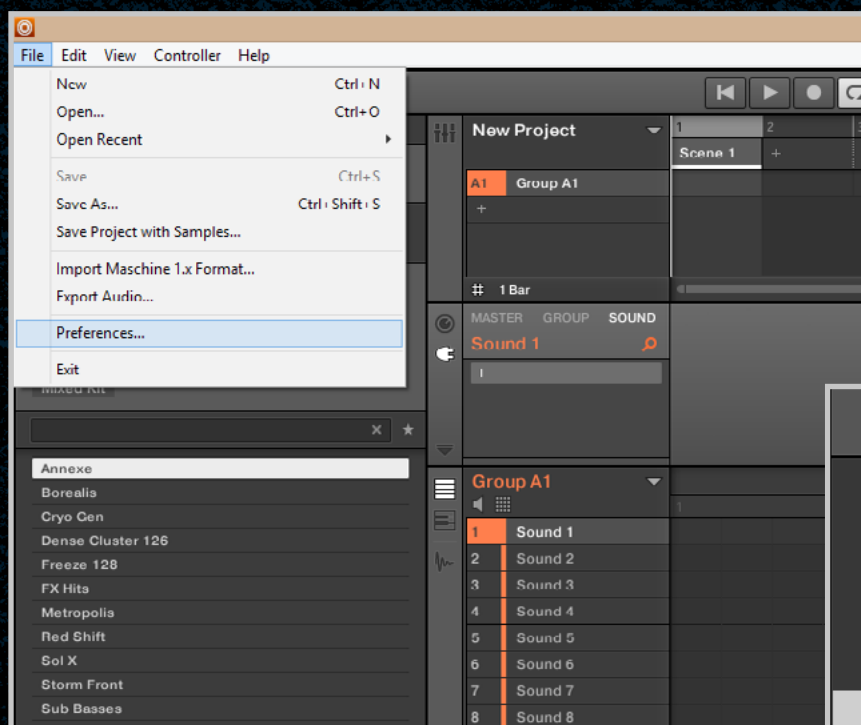
Maschine Packs

Maschine has a slightly different install process depending on the version you have. Please follow the guide-lines below and see the additional notes if you are experiencing difficulties.

[This video](#) may also be of help.

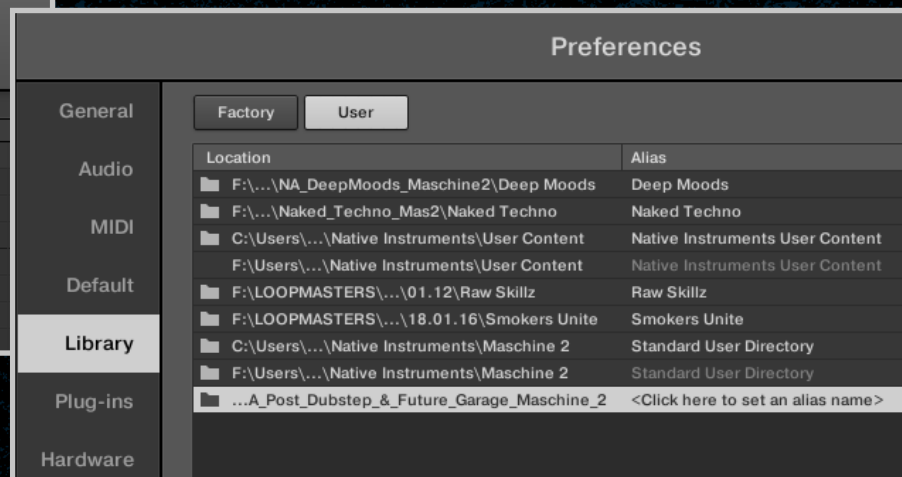
Maschine 2.0

Having extracted the pack to your computer, launch Maschine and select **File**, **Preferences**, then **Library** and click on the **User** tab. Click **Add** to open the file browser and locate the **main pack folder** (containing the pack's projects, groups and samples) for example '**Post Dubstep & Future Garage**'.



Now the folder has been located we need to add an alias name for the pack – click under **Alias** and type the **exact** name of the pack, including numbers, capitals and symbols.

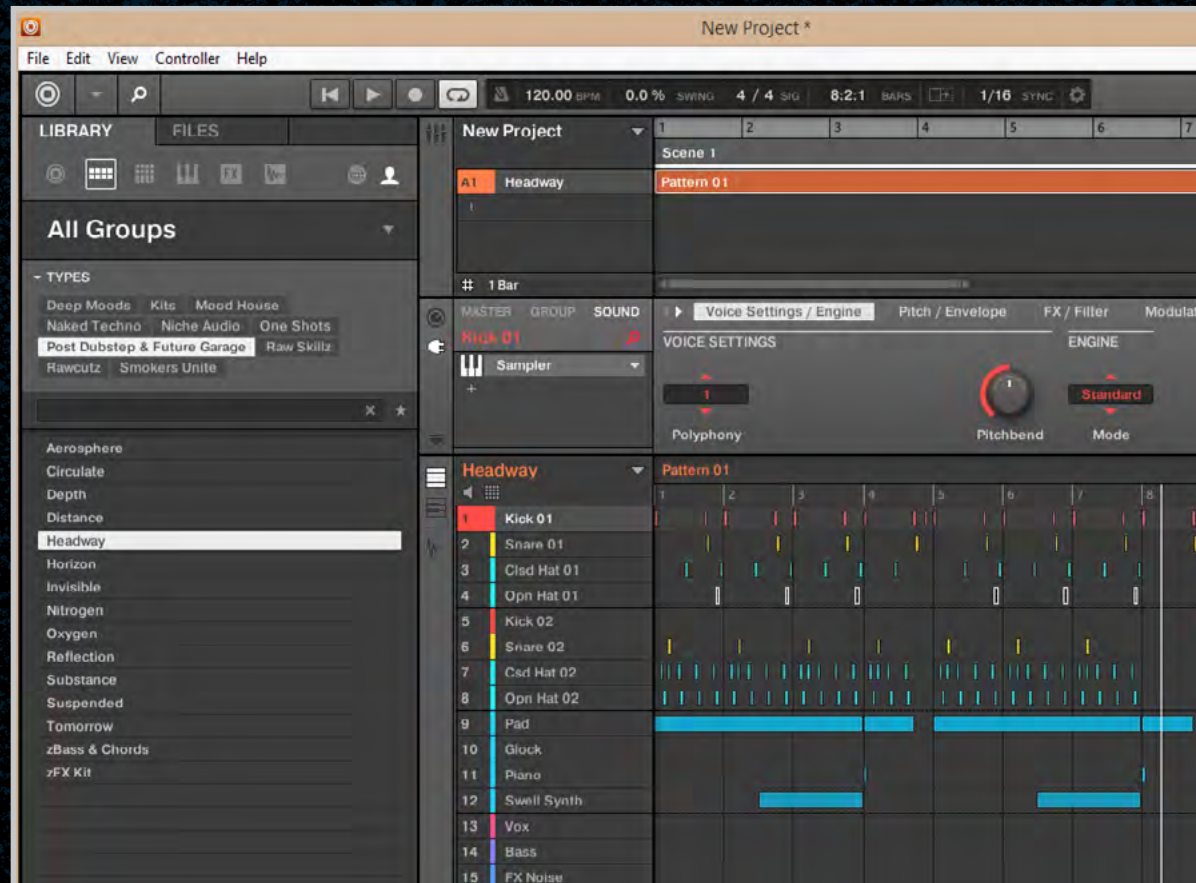
Now close the preferences window and you will see the pack in your user library!



FILE FORMATS : MASCHINE (cont.)

Maschine 1.8

Having extracted the pack to your computer, launch Maschine and select **File, Preferences**, then **User Paths**. Click **Add** and locate the **main pack folder** (containing the pack's projects, groups and samples) for example '**Post Dubstep & Future Garage**'. Click under the **Alias** tab alongside the pack and type in the **exact** name of the pack including numbers, capitals and symbols. Now close the preferences window and you will see the pack in the your user library!



Install problems? See next page...

MASCHINE INSTALL PROBLEMS?

If you have previously installed a Maschine Pack and the groups or projects are not loading please ensure you have installed the correct pack for your version of Maschine, and have created an alias to the sample pack so that Maschine can locate the projects.

The alias should be written as: **Post Dubstep & Future Garage**

The alias should not be written as: **post dubstep and future garage**

If you don't type the exact name of the pack, it will not install correctly.

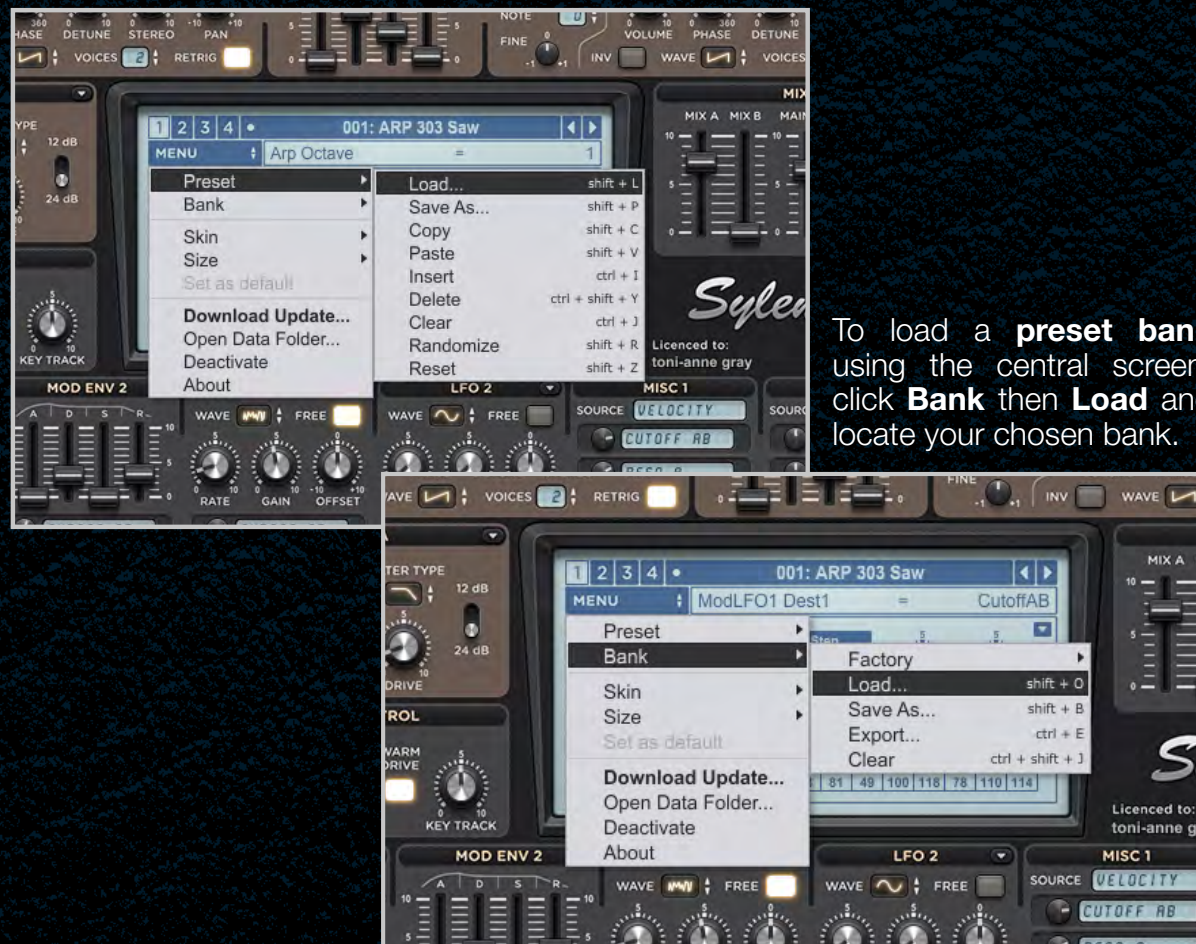
You may need to uninstall the pack entirely from Maschine and install from fresh to prevent any cross referencing.

To do this, go to Maschine preferences, select the library button and then user. Remove any previous location path to the Niche Audio packs and close Maschine, then start a new project (this is to clear the history). Quit Maschine, re-open it and follow the instructions above.

VST PRESETS : SYLENTH

Sylenth

Open an instance of Sylenth within your DAW. Using the central screen click **Preset** then **Load** and locate the **individual preset** within your extracted folder. You may select **multiple presets** to import them at once – using the left/right arrows to change between them.



To load a **preset bank** using the central screen, click **Bank** then **Load** and locate your chosen bank.

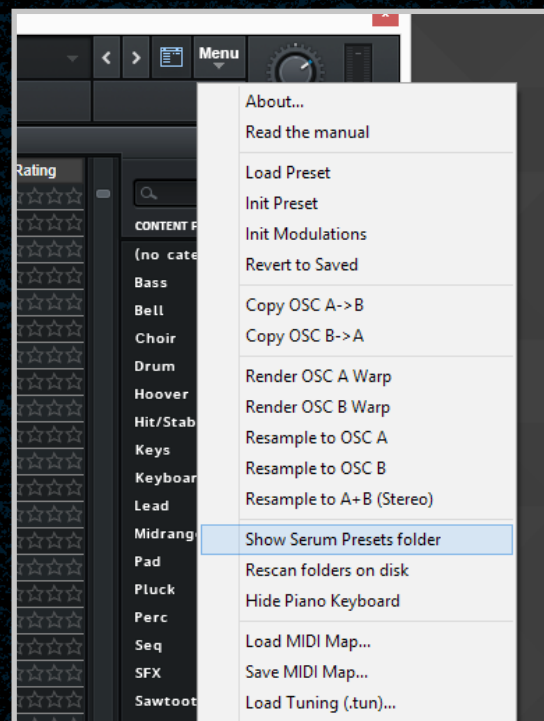
VST PRESETS : SERUM

Serum

Load an instance of Serum into your DAW. First, you need to load the patches into the **Serum Presets** folder, which can be located by clicking **Menu** then **Show Serum Presets folder**. This will open the location of all the Serum content.

Locate the **Presets** folder, then **User** folder within it. Now move the purchased presets to the User folder and reload Serum.

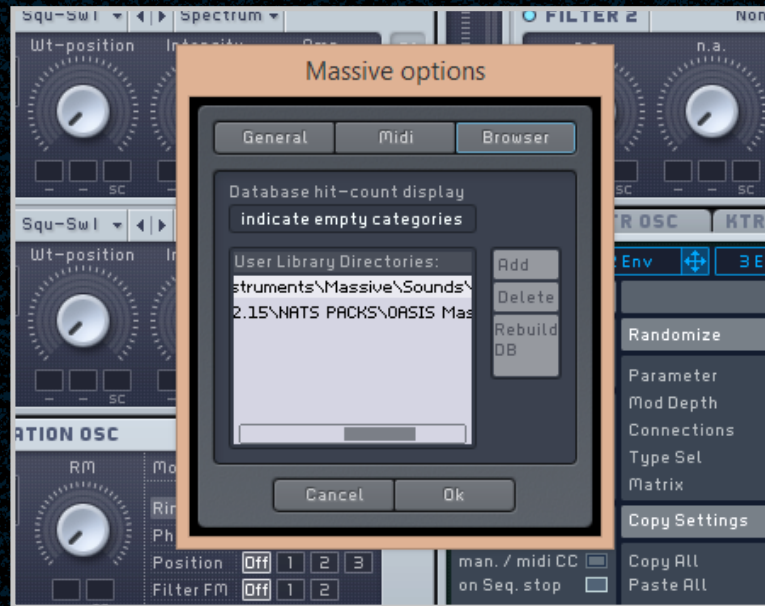
Once it's reloaded, click the browser icon next to the word **Menu** and you'll see your presets in the list below. Double click your selected preset to load it!



VST PRESETS : MASSIVE

Massive

Load Massive in your DAW and click the **File** dropdown at the top of Massive and select **Options**. Click the **Browser** tab and look at **User Library Directories** - note the folder location, it should look like this:



Macintosh

HD:Users:John:Documents:Native Instruments:Massive:Sounds

Windows

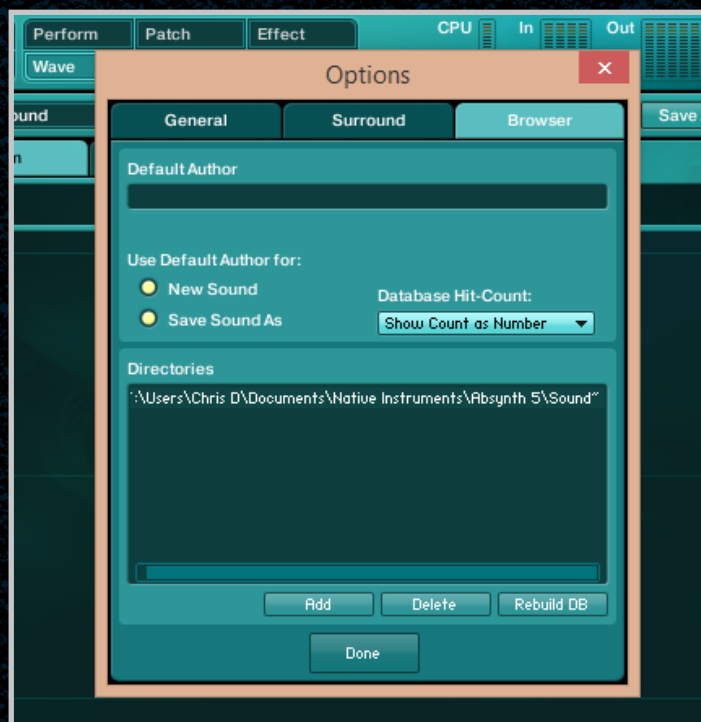
C:\Users\John\Documents\Native Instruments\Massive\Sounds

Locate this directory on your computer and place your presets here. Click **Rebuild DB** at the bottom right, you will see the bank name of the product appear on the left side of the Attributes/Browser windows.

VST PRESETS : ABSYNTH

Absynth

Load Absynth in your DAW and click the **File** dropdown at the top left of Absynth and select **Options**. Click the **Browser** tab and look in the **Directories** window - note the Sounds folder location, it should look like this:



Macintosh

HD:Users:John:Documents:Native Instruments:Absynth 5:Sounds

Windows

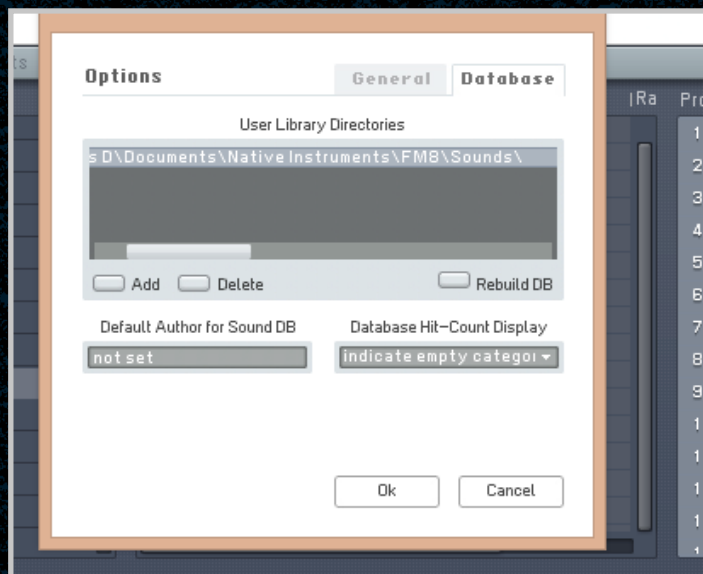
C:\Users\John\Documents\Native Instruments\Absynth 5 \Sounds

Locate this directory on your computer and place your presets here. Click **Rebuild DB** at the bottom right, you will see the Bank Name of the product appear on the left side of the Attributes/Browser windows.

VST PRESETS : FM8

FM8

Load FM8 in your DAW and click the **File** dropdown at the top of FM8 and select **Options**. Click the **Database** tab and look at **User Library Directories** – note the folder location, it should look like this:



Macintosh

HD:\Users\John\Documents\Native Instruments\FM8\Sounds

Windows

C:\Users\John\Documents\Native Instruments\FM8\Sounds

Locate this directory on your computer and place your presets here. Click **Rebuild DB** at the bottom right, you will see the Bank Name of the product appear on the left side of the Attributes/Browser windows.

CONTACT US

If you have any problems you may contact us and we will be more than happy to assist you. Please include as much information as possible, including:

- The sample pack you have purchased
- Order number
- Registered email
- Your DAW (eg. Ableton, Cubase, Logic, Reason)
- A detailed description of the problem
- Software versions
- Screenshots (if possible)

Also ensure all software is up to date before emailing, and send your questions to:

support@loopmasters.com

Loopmasters

CHECK OUT [LOOPMASTERS.COM](https://loopmasters.com) FOR MORE INSPIRING CONTENT

Get the latest sounds for your favourite genres of music

Save money on packs by checking out our [Bundles](#) and [Sales](#)

Get the latest VST instruments,
Effects and more from:

Loopcloud - the innovative cloud
plugin for music producers:

 Loopcloud
SOUND INSPIRATION TO YOUR DAW

Visit our [Support](#) section if you have any further queries. You may also like to see our [Terms and conditions](#).